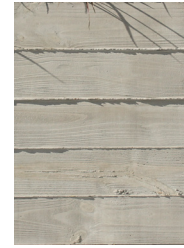




TIGHT JOINTS



MEDIUM JOINTS



FINGER JOINTS

UNLESS SPECIFIED: DEFAULT JOINT SIZE IS A MEDIUM JOINT (SHOWN)

CONSTRUCTION

1. The Boardform Series Planters are a line of completely customizable planter pots. Units range from 3" - 3.5" thick and are manufactured according to designer's specifications. They are manufactured with standard 1", 1.5", 2" drain holes, or no drain holes. They have an average strength tested at 28-30 days of 5,810 psi.

2. Planters come with steel loops cast within inside of planter for lifting/locating the unit.

3. Planters are lightly sealed inside/outside to enhance color and protect surfaces from moisture, dirt, and stains.

4. Form and Fiber's boardform planters are cast using a standard gray cement base, with no integral pigment.

5. Integral pigments can be added for an upcharge per unit, however, pigment can "mute" the grain pattern and create a monochromatic effect making it visually difficult to see. Standard Gray allows for the highest level of grain expression in units cast.

WALL THICKNESS & SIZE LIMITATIONS

1. The standard wall thickness cast for Form and Fiber's boardform planters is as follows:

- 3.0" Minimum wall thickness for planters up to 6'-0" L (72")
- 3.5" thickness for planters over 6'-0" L (72") and up to 8'-0" L (96")
- 4.0" thickness may be used per manufacturer discretion
- Limitations in size will apply over 8'-0" L and/or over 4,000 lbs.

2. Form and Fiber is able to cast a variety of sizes of boardform planters, however, limitations do apply.

- 8'-0" MAXIMUM LENGTH with a MAXIMUM WIDTH of 4'-0" or less

CUSTOM UNIT SIZING

Height	Customizable Using 4/6/8" Nominal Board widths
Width	Customizable with limitations for overall size
Length	Customizable Up to 96" long
Pattern	Horizontal Aligned or Offset
Joints	Finger, Medium, or Tight Joints
Default	6" Boards with Medium Joints

Note: If not specified, 6" nominal boards & medium joints are used as the standard default for fabrication of units. Board sizes will be ripped to meet specified joint size and overall height of unit.

BOARDFORM SERIES STANDARD SIZES

PRODUCT ID	LENGTH	WIDTH	HEIGHT	THICKNESS	AVG. WT.
BX_BF 723018	72"	30"	18"	3 IN.	1468 lbs
BX_BF 481824	48"	18"	24"	3 IN.	1015 lbs
BX_BF 601824	60"	18"	24"	3 IN.	1214 lbs
BX_BF 721824	72"	18"	24"	3 IN.	1414 lbs
BX_BF 242424	24"	24"	24"	3 IN.	725 lbs
BX_BF 602424	60"	24"	24"	3 IN.	1378 lbs
BX_BF 723028	72"	30"	28"	3 IN.	1982 lbs
BX_BF 481830	48"	18"	30"	3 IN.	1214 lbs
BX_BF 601830	60"	18"	30"	3 IN.	1450 lbs
BX_BF 721830	72"	18"	30"	3 IN.	1686 lbs
BX_BF 303030	30"	30"	30"	3 IN.	1133 lbs
BX_BF 481832	48"	18"	32"	3 IN.	1281 lbs
BX_BF 482434	48"	24"	34"	3 IN.	1523 lbs
BX_BF 363636	36"	36"	36"	3 IN.	1631 lbs